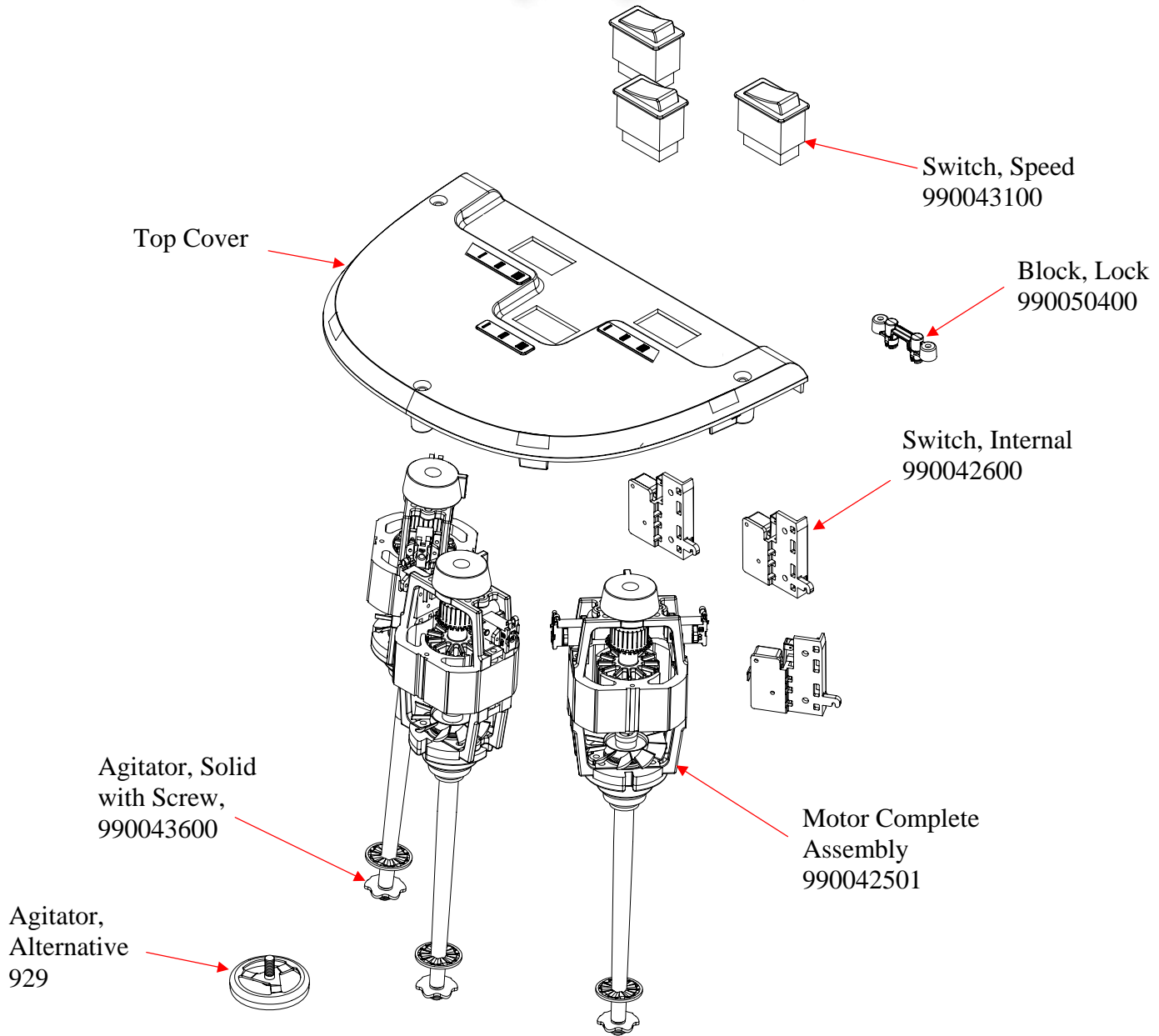


EXPLODED VIEW
HMD400 (220V)

PROPRIETARY RIGHTS NOTICE This document and all information contained within it is the property of Hamilton Beach/Proctor-Silex, Inc. (HB/PS). It is confidential and proprietary and has been provided to you for a limited purpose. It must be returned upon request or destroyed as set forth in the Specification Notice. Disclosure, reproduction or use of this document and any information contained within it, in full or in part, for any purpose is forbidden without the prior written consent of HB/PS. No photographs may be taken of any article fabricated or assembled from this document without the prior written consent of HB/PS.



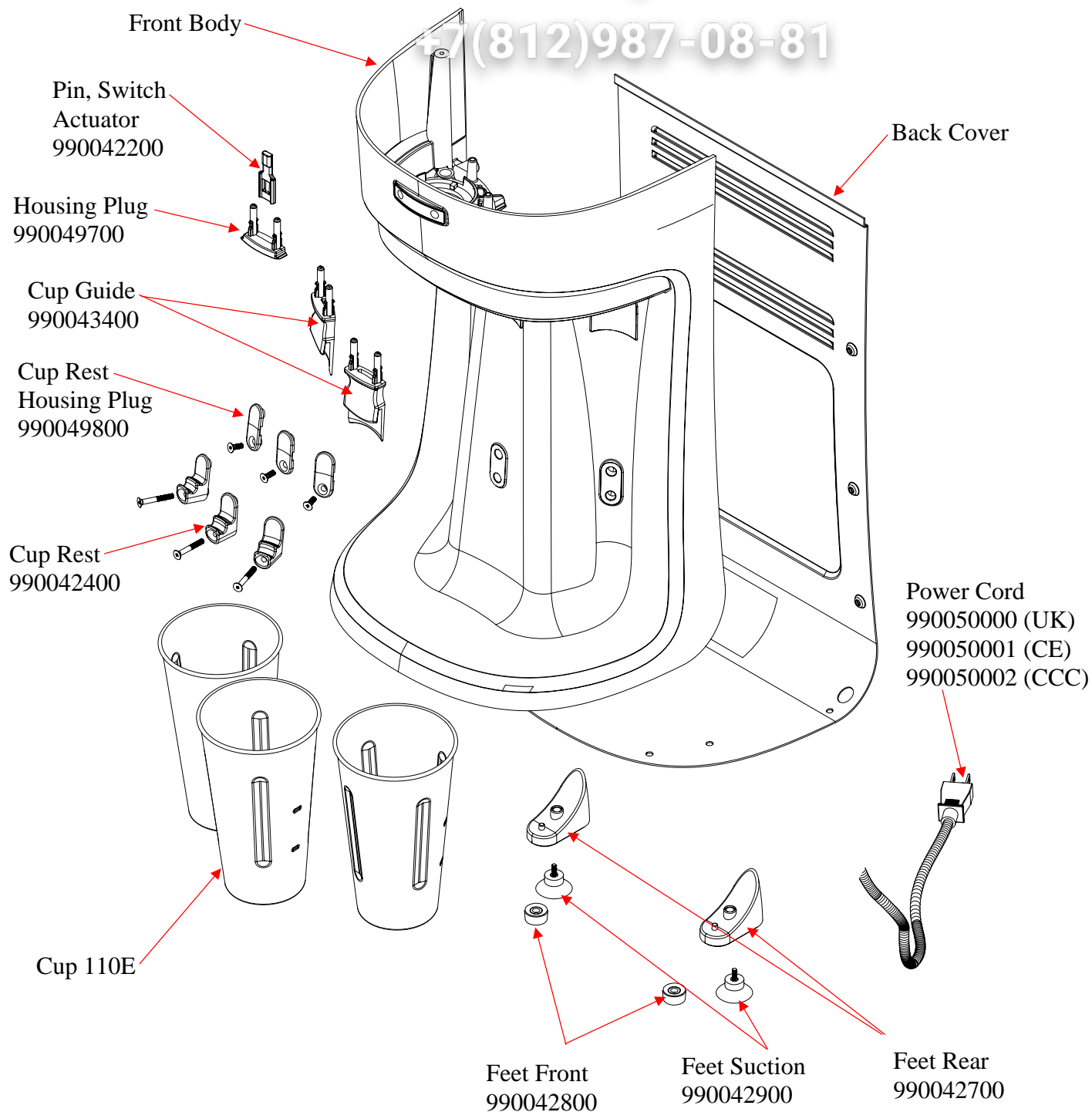
*** Factory Assembled, Not Available As Separate Pieces**

HAMILTON BEACH / PROCTOR-SILEX, INC. 4421 WATERFRONT DRIVE GLEN ALLEN, VA 23060		NPR-1632: Production Release			ISSUE CODE	
DRAWN BY: TAG	ENG. IN CHG. AL	DATE: 08/29/06	APPROVED BY:		CS	SP
INITIAL USE: HMD400 (220V)	PICT. REF.	SHEET 1 / 3	DRAWING NO. 5100025XX	REV. A		

EXPLODED VIEW HMD400 (220V)

vsezip.ru

7(812)987-08-81



HAMILTON BEACH / PROCTOR-SILEX, INC.
4421 WATERFRONT DRIVE GLEN ALLEN, VA 23060

NPR-1632: Production Release

ISSUE CODE

DRAWN BY:
TAG

ENG. IN CHG.
AL

DATE:
08/29/06

APPROVED BY:

CS

SP

INITIAL USE:
HMD400 (220V)

PICT. REF.

SHEET
2 / 3

DRAWING NO.
5100025XX

REV.
A

EXPLODED VIEW
HMD400 (220V)



PCB
990050500

HAMILTON BEACH / PROCTOR-SILEX, INC. 4421 WATERFRONT DRIVE GLEN ALLEN, VA 23060		NPR-1632: Production Release			ISSUE CODE	
DRAWN BY: TAG	ENG. IN CHG. AL	DATE: 08/29/06	APPROVED BY:		CS	SP
INITIAL USE: HMD400 (220V)	PICT. REF.	SHEET 3 / 3	DRAWING NO. 5100025XX	REV. A		